



Are your
kids tired of
playing with
the same
old
sandbox?



Are
geography
classes
getting too
boring?



How about playing
with sand to learn
topography and
contour lines?

Sounds interesting,
doesn't it?

Presenting to you,

The Augmented Reality

SANDBOX

The Augmented Reality Sandbox

“Using 3D visualization to teach concepts of earth science using real sand!”



The Augmented Reality (AR) Sandbox consists of a sandbox, a projector and a 3D camera, coupled with a powerful simulation and visualization software.



The system allows users to create various topographies by moulding sand.



The camera placed above the sand box identifies the landscape created with the sand and also its height.



The projector then projects a wide variety of colours on the sand based on the elevations created.



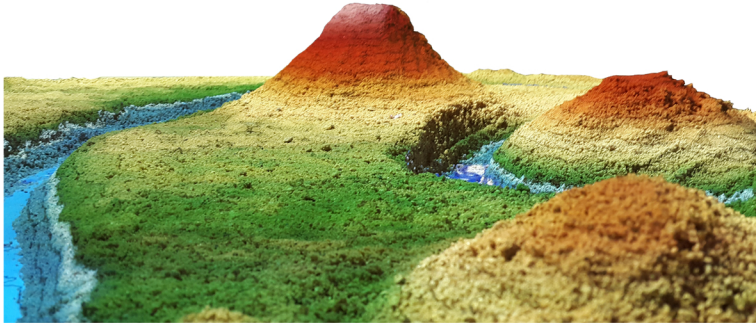
An awesome tool to teach geographical concepts in an exciting way, using **ONLY** plain sand!



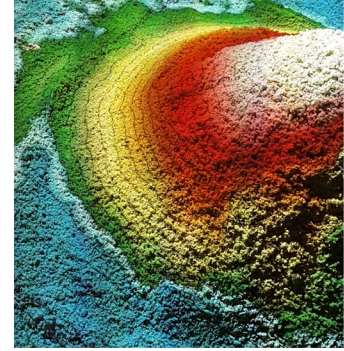
The topography of the Indian subcontinent made from sand with the AR sandbox and the elevation colours projected.

The software for the augmented reality sandbox is based on the open source software developed by Prof. Oliver Kreylos of the University of California, Davis (UC Davis).

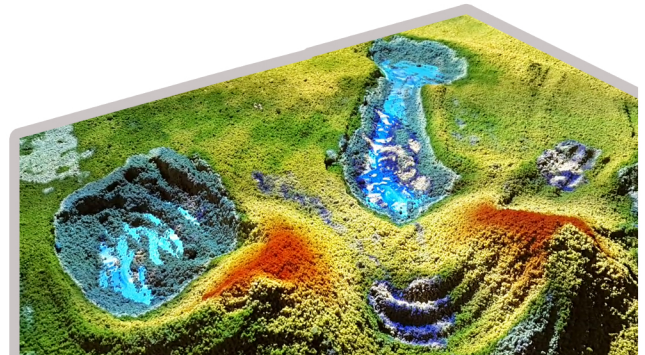
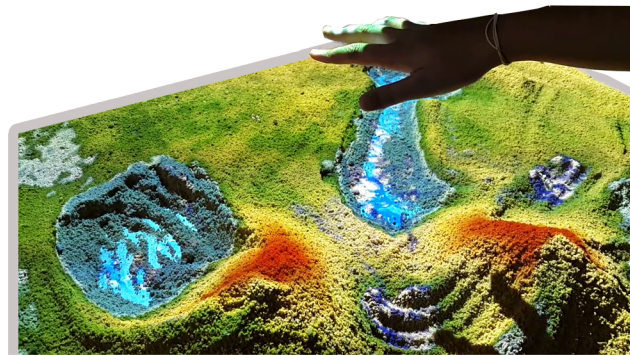
So what can you teach?



Learn about topography models by making your own hills, lakes and valleys out of real sand!



View geographic contour lines and elevation colour maps projected on sand in real time.



Simulate rain by placing your hands over the sand and learn about the flow of water.

Also, concepts of aerial survey, topographical maps and watershed management can be explained to students by engaging them with many such fun filled activities with the AR Sandbox!

The Augmented Reality Sandbox can be installed at schools, organizations, institutions and museums for interactive learning.



**Complete fun for
children and
adults to
learn and play!**

Quick Facts:

- ✦ The sandbox measures 40" in width, 30" in depth and 70" in height.
- ✦ This product is extremely safe for children, since it does not use any colours or clay.
- ✦ The AR Sandbox comes with a warranty of one year and is generally maintenance-free.

Overall, the Augmented Reality Sandbox transforms learning geography into an enjoyable experience.



Museum Interactives has been contributing towards creating experiential models for museums and taking the learning to new heights. Together, let's promote interactive education.

To view the AR sandbox in action, visit
<https://youtu.be/8yoxJB0pxz0>

To install sandbox in your organization, please contact us.

#2634 (Annexe), South End Road,
Seshadripuram, Bangalore 560020.
email: museuminteractives@gmail.com
www.museuminteractives.in

Ph No.: + 91 8904874950
+ 91 9448458890